

# 参考规格书

## SPECIFICATION FOR REFERENCE

<b>CUSTOMER:</b> 客 户:	
<b>CUSTOMER P.N.:</b> 客户料号:	
<b>MODEL NO.:</b> 产品型号:	M30-Z1000J300-030BB0-P
<b>PRODUCT NO.:</b> 产品编号:	SCXXX-P0
<b>SAMPLE DATE:</b> 送样日期:	2024-02-01

<b>CUSTOMER AUTHORIZED SIGNATURE</b> 客户承认签核		

Please return to us one copy of "SPECIFICATION FOR APPROVAL"  
with you approved signature.

客户确认签字，盖章后请回传一份承认书给我司。

**ADD: MOSO Industrial Park, Nanshan District, Shenzhen, Guangdong  
518108, P. R. China**

地址:深圳市南山区茂硕科技园

**TEL: 86-755-27657000 27657555**

**P.C.: 518108**

**FAX: 86-755-27657908**

**E-mail:moso@mosopower.com**

**<http://www.mosopower.com>**

<b>MANUFACTURER AUTOGRAPH</b> 制造商签名			
Reviser 修订	Confirm 确认	Checked 审查	Approval 批准



**\*\* Table Of Content/目录 \*\***

1. SCOPE .....	4
1.1. Description /类型 .....	4
1.2. Green Requirements/环保要求 .....	4
1.3. Energy Efficiency Requirements/能效要求 .....	4
2. Input Characteristics/输入特性 .....	5
2.1. Input Voltage & Frequency/输入电压与频率 .....	5
2.2. Input AC Current/AC 输入电流 .....	5
2.3. Inrush Current (cold start)/浪涌电流(冷启动) .....	5
2.4. Average Efficiency 平均效率 .....	5
2.5. Energy Consumption /空载功耗 .....	5
3. Output Characteristics/输出特性 .....	5
3.1. Static Output Characteristics <Vo & R+N>/静态输出特性 .....	5
3.2. Line/ Load Regulation/线性/负载调整率 .....	5
3.3. Turn - on Delay Time/开机延迟时间 .....	6
3.4. Hold-up Time/关机维持时间 .....	6
3.5. Rise Time/上升时间 .....	6
3.6. Fall Time/下降时间 .....	6
3.7. Output Overshoot / Undershoot/输出过冲/欠冲 .....	6
3.8. Output Load Transient Response/输出负载瞬态响应 .....	6
4. Protection Requirements/保护要求 .....	6
4.1. Over Current Protection/过流保护 .....	6
4.2. Short Circuit Protection/短路保护 .....	6
4.3. Over Voltage Protection/过压保护 .....	6
5. Environment Requirements/环境要求 .....	7
5.1. Operating Temperature and Relative Humidity/操作温/湿度要求 .....	7
5.2. Storage Temperature and Relative Humidity/存储温/湿度要求 .....	7
5.3. Vibration/振动 .....	7
5.4. Drop Test/跌落 .....	7
5.5. Hearing Noise 噪音 .....	7
6. Reliability Requirements/可靠性要求 .....	7
6.1. Burn-in/煲机 .....	7
6.2. MTBF/平均间隔故障时间 .....	7
7. EMI/EMS Standards/EMI/EMS 标准 .....	7
7.1. EMI Standards/EMI 标准 .....	7
7.2. EMS Standards/EMS 标准 .....	8
8. Safety Standards/安规标准 .....	9

8.1. Dielectric Strength(Hi-pot)/介电耐压强度(高压).....	9
8.2. Leakage Current/漏电流 .....	9
8.3. Insulation Resistance/绝缘阻抗 .....	9
8.4. Regulatory Standards/安规标准 .....	9
9. Mechanical Outline Drawing/外观示意图 .....	10
10. I/O Marking Drawing/铭牌示意图 .....	11
11. Package Drawing/包装示意图 .....	12

## 1. SCOPE

The document detail the electrical, mechanical and environmental specifications of a SMPS, the power supply provide 30W continuous output power.

资料详细描述了一款 30W (连续输出功率)开关电源的电气性,结构性及环境等要求.

The power supply shall meet the HSF requirement.

此款电源符合 HSF 要求.

### 1.1. Description /类型

- SMPS Adaptor(Wall mount)/插墙式适配器       SMPS Adaptor(Desk-top)/桌面型适配器  
 Open Frame/开放式结构       SMPS Unit (With Case)/带铁壳型  
 Others/其他

### 1.2. Green Requirements/环保要求

- RoHS:2011/65/EU & (EU) 2015/863;  
 REACH:1907/2006/EC;  
 Halogen-free:IEC 61249-2-21;  
 CA Prop 65;  
 POPs:(EU)2023/1608;  
 PAHs: 2005/69/EC;  
 Packaging Directive:94/62/EC;  
 US EPA Toxic Substances Control Act (TSCA);  
 MOSO Environmental standards: WI-QM006-G;  
 Others

### 1.3. Energy Efficiency Requirements/能效要求

No.	Country/国家地区	Energy efficiency abbreviation/能效简称	Whether it meets the requirements/是否符合(YES/是 <input checked="" type="checkbox"/> , NO/否 <input type="checkbox"/> )
1	USA/美国	DoE VI	<input type="checkbox"/>
2		CEC	<input type="checkbox"/>
3	Canada/加拿大	NRCAN	<input type="checkbox"/>
4	Australia/New Zealand/澳大利亚/新西兰	GEMS	<input type="checkbox"/>
5	Europe/欧盟	Erp VI	<input type="checkbox"/>
6		CoC V5 Tier 2	<input type="checkbox"/>
7	South Korea/韩国	KMEPS	<input type="checkbox"/>
8	Mexico/墨西哥	MEPS	<input type="checkbox"/>
9	Byelorussia/白俄罗斯	MEPS	<input type="checkbox"/>

## 2. Input Characteristics/输入特性

### 2.1. Input Voltage & Frequency/输入电压与频率

The range of input voltage is from 180Vac to 264Vac single phase.

输入电压范围: 从 **180Vac** 到 **264Vac**, 单相输入.

	Minimum/最小	Nominal/额定值	Maximum/最大
Input Voltage/输入电压	180Vac	200 Vac~ 240 Vac	264Vac
Input Frequency/输入频率	47 Hz	60 Hz/ 50Hz	63Hz

### 2.2. Input AC Current/AC 输入电流

1.0A max. @ 200-240Vac input & Full load.

输入电压 **200-240Vac** 满载时, 输入电流不超过 **1.0A**。

### 2.3. Inrush Current (cold start)/浪涌电流(冷启动)

100A max. @ 264Vac input

输入电压 **264Vac** 时, 输入电流不超过 **100A**。

### 2.4. Average Efficiency 平均效率

86.94% min. @230Vac/50Hz input (@25%, 50%, 75% and 100% of max load).

Note: The DC power supply shall be operated at 100% of nameplate current output for at least 30 minutes immediately prior to conducting.

输入电压 **230Vac/50Hz** 时, **25%、50%、75%和 100%**载时的平均效率不低于 **86.94%**。

测试能效时, 需要在带载额定电流下工作 **30** 分钟。

### 2.5. Energy Consumption /空载功耗

No load Consumption  $\leq 0.1W$  (230Vac/50Hz).

在额定输入 **230Vac/50Hz** 时, 空载功耗  $\leq 0.1W$ 。

## 3. Output Characteristics/输出特性

### 3.1. Static Output Characteristics <Vo & R+N>/静态输出特性

Output	Rated Load/额定负载		Output Range	R+N	Remark
Rate	Min. Load	Rate.Load	输出电压范围	纹波与噪声	备注
+30 V	0.0A	1.0A	28.5V ~ 31.5V	240mVp-p	200-240V

Ripple & Noise: Measurement is done by 20MHz bandwidth oscilloscope and the output paralleled a 0.1uF ceramic capacitor and a 10uF electrolytic capacitor. (test under the condition of rated input and rated output).

纹波与噪声: 量测时示波器选用 **20MHz** 带宽限制, 输出端要并联一颗 **0.1uF** 的陶瓷电容和一颗 **10uF** 的电解电容. (在额定输入及输出的条件下检测).

### 3.2. Line/ Load Regulation/线性/负载调整率

Output	Load Condition/负载条件		Line Regulation	Load Regulation	Remark
Rate	Min. Load	Rate.Load	线性调整率	负载调整率	备注
+ 30V	0.0A	1.0A	$\pm 1\%$	$\pm 5\%$	

### **3.3.Turn - on Delay Time/开机延迟时间**

3S max. @ 200-240Vac input & Full load.

输入电压 **200-240Vac** 满载时, 开机延迟时间不超过 **3S**。

### **3.4.Hold-up Time/关机维持时间**

20mS min. @ Full load & 230Vac/50Hz input turn off at the worst case.

输入电压 **230Vac/50Hz** 满载时, 关机时间最差情况不小于 **20** 毫秒。

### **3.5.Rise Time/上升时间**

100mS max. @ Rated load.

额定负载时, 上升时间不超过 **100** 毫秒。

### **3.6.Fall Time/下降时间**

30mS max. @ Full load.

满载时, 下降时间不超过 **30** 毫秒。

### **3.7.Output Overshoot / Undershoot/输出过冲/欠冲**

10% max. When the power on or off.

开关机时, 输出过冲/欠冲均不大于 **10%**。

### **3.8.Output Load Transient Response/输出负载瞬态响应**

Output voltage within 28.5 ~ 31.5V for load step from 20% to 80%, R/S: 0.5A/uS,

Frequency: 100Hz duration and 8mS at 80%.

输出电压在 **28.5~31.5V** 之间, 负载变化: 从 **20%**到 **80%**, 斜率 **0.5A/uS**, 频率: 在 **80%**负载 **100Hz** 持续 **8 mS**。

## **4. Protection Requirements/保护要求**

### **4.1.Over Current Protection/过流保护**

Over Current Point Limited/过流点限制:  $I > 1.9A$  (维持时间 54mS, 200-240Vac)

The output shall hiccup when the over current applied to the output rail, and shall be auto-recovery when the fault condition is removed.

当过电流时, 输出将进入打嗝模式, 当过流情况解除后, 产品将会自动恢复正常。

### **4.2.Short Circuit Protection/短路保护**

The input power shall decrease when the output rail short, the power supply shall no damage, and shall be auto-recovery when the fault condition is removed.

当输出短路时, 产品输入功率降低且不会损伤, 当短路情况解除后, 产品将会自动恢复正常。

### **4.3.Over Voltage Protection/过压保护**

The power supply has to be protected against over voltage conditions. No damage allowed. The power supply must come back to nominal working without on/off powering after removal of the over voltage condition.

当过压保护时, 产品输出功率不会损伤, 当过压情况解除后, 产品恢复正常。

## 5. Environment Requirements/环境要求

### 5.1. Operating Temperature and Relative Humidity/操作温/湿度要求

0°C to +40°C

10%RH to 90%RH

### 5.2. Storage Temperature and Relative Humidity/存储温/湿度要求

-20°C to +70°C

5%RH to 95%RH non-condensing @ Sea level shall be low 5,000 meters/低于 5,000 米。

### 5.3. Vibration/振动

Vibrating Amplitude :1.5mm(Max.) ;Frequency range: from 10Hz to 55Hz,

Constant time:10-55-10Hz(1 minute); Direction: vibration X, Y and Z-axis, at least 120min/axis. Normal performance after test condition is removed.

振动振幅: 1.5mm (最大); 频率范围: 从 10Hz 到 55Hz, 恒定时间: 10-55-10Hz (1 分钟); 方向: 振动 X、Y 和 Z 轴, 至少 120min/轴。测试条件消除后的正常性能。

### 5.4. Drop Test/跌落

Packing shall survive drops on all 6 faces from a height of 1m onto hard wood (Total 1 times/face).

在1m高度下跌落, 测试6个面。

### 5.5. Hearing Noise 噪音

The noise generated by the adapter supplied under 220Vac of no load and full load shall be lower than 30dB, measure 5cm from the nameplate.

适配器在 220Vac 空载和满载条件下产生的噪音应低于 30dB, 距离铭牌 5cm 处测量。

## 6. Reliability Requirements/可靠性要求

### 6.1. Burn-in/煲机

The power supply shall be burn-in for 4 Hours under normal input and 80 % rated load at 40°C ± 5°C.

产品至少要在 40°C ± 5°C 的环境及 80%额定负载条件下煲机 4 小时。

### 6.2. MTBF/平均间隔故障时间

The power supply shall have a calculated MTBF of greater than 30,000 hours at ambient temperature 25°C, Reference standard: MIL-HDBK-217F.

在环境温度为 25°C 时, 电源的平均 MTBF 应当大于 30,000 小时, 参考标准: MIL-HDBK-217F。

## 7. EMI/EMS Standards/EMI/EMS 标准

### 7.1. EMI Standards/EMI 标准

EMI	Standards/ 标准	Approval stage/ 承认阶段	Mass production stage /量产阶段
Radiated Emission	EN55032	QP≥6dB	QP≥4dB

Conduction Emission	EN55032	QP≥6dB	QP≥4dB
---------------------	---------	--------	--------

**7.2.EMS Standards/EMS 标准**

7-2-1 EN 61000-4-2,electrostatic discharge(ESD) requirement/静电抗扰度要求

Discharge characteristic/静电规格	Test level/测试条件	Test criteria/测试标准
Air discharge/空气放电	+/-8 KV	A
Contact discharge/接触放电	+/-4 KV	A

7-2-2 EN 61000-4-3, radiated electromagnetic field susceptibility(rs)/辐射骚扰场强

Test level/测试条件	Test criteria/测试标准
3V/m (r.m.s)	A
30-1000MHz,80%AM(1KHz) sine-wave	

7-2-3 EN 61000-4-4,electric fast transients(burst) immunity requirement/电快速瞬变脉冲群

Coupling/测试端口	Test level/测试条件	Test criteria/测试标准
AC-input/交流输入	2KV	A
AC-input/交流输入	1KV	A

7-2-4 EN 61000-4-5,surge capability requirement/浪涌抗扰度要求

Surge voltage/雷击电压	Test criteria/测试标准
Common mode/共模 +/- 2KV	B
Differential mode/差模 +/-2KV	

7-2-5 EN 61000-4-6, Induced radio frequency fields conducted disturbances immunity requirement/电源端子传导骚扰实验

Test level/测试条件	Test criteria/测试标准
3V	A
0.15-30 MHz,80%AM(1KHz)	

7-2-6 Assessment criteria /评估标准

Acceptance criteria 可接受标准	Performance 性能
A	Agreed operational behavior within the specified limits 性能不允许变化; 如果性能会发生变化, 则变化的范围在产品规格书规定的范围内.
B	Time limited functional diminishment or malfunction during the tests is permitted. The function is self-reactivated by the unit following completion of the tests. 设备在测试过程中,性能降低允许在产品规格书要求范围内,干扰消除后,设备能恢复正常,不允许出现复位和任何方式的人工干预.
C	Malfunction is permitted .The function can be reactivated either by reconnection to the mains or by operator intervention. 在测试过程中, 设备允许出现业务中断, 测试完毕后允许自行恢复或者人工干预恢复(包括硬件上干预); 测试中只允许初级防护器件损坏, 并且更换损坏的初级防护器件后, 设备能恢复正常

**8. Safety Standards/安规标准**

**8.1.Dielectric Strength(Hi-pot)/介电耐压强度(高压)**

Primary to Secondary: 3000Vac / 10mAMax / 60 second (when safety testing)

初级对次级: **3000Vac / 10mAMax / 60 秒** (安规试验)

Primary to Secondary: 3300Vac / 5mAMax /3S (when production)

初级对次级: **3300Vac / 5mAMax / 3S** (生产作业)

**8.2.Leakage Current/漏电流**

0.25mA max. at 264Vac / 60Hz.

**8.3.Insulation Resistance/绝缘阻抗**

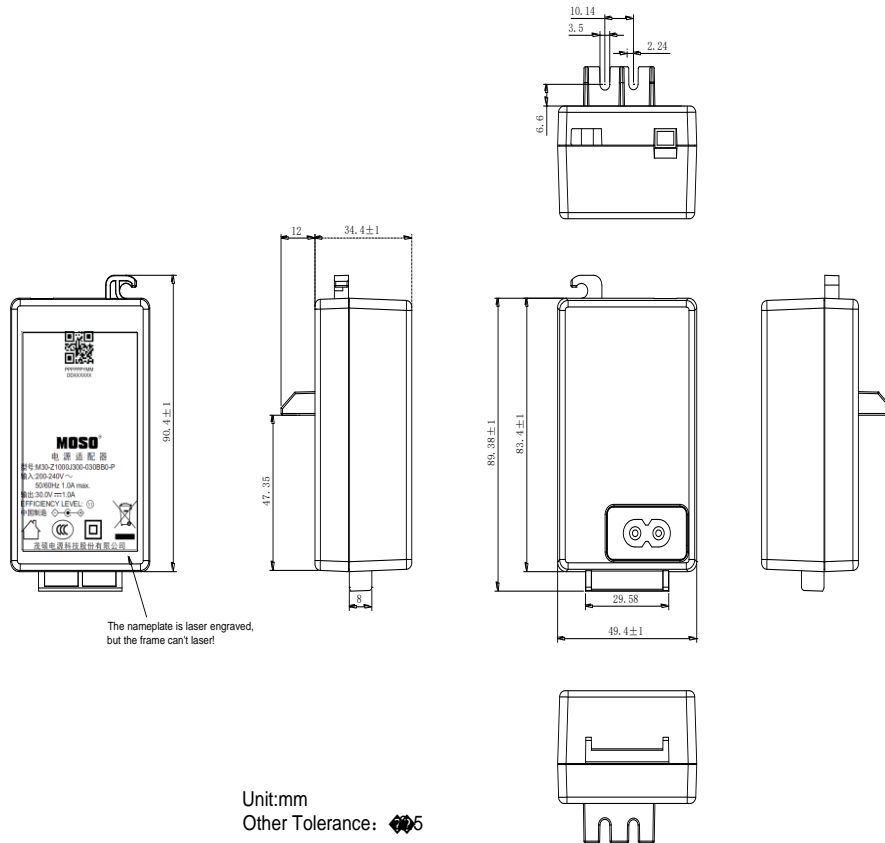
50MΩ min. at primary to secondary add 500Vdc test voltage

在初级与次级间加 **500Vdc** 进行测试

**8.4.Regulatory Standards/安规标准**

Type/安规	Country/国家	Standard/标准	State/状况	
CCC	China	GB4943.1	MEET	

## 9. Mechanical Outline Drawing/外观示意图



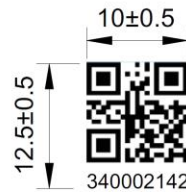
Case material:  PC temperature resistance: 120°C.

PC+ABS temperature resistance: 95°C.

Remark: 1) PC material compliances with ball pressure testing requirement.

2) The colour of enclosure are black(1101M).

## 10. I/O Marking Drawing/铭牌示意图



下方内容与二维码居中  
字体Arial

二维码格式/Code format: QR code  
二维码尺寸/Code size :10\*10mm( $\pm 0.2$ )  
二维码扫描内容/Code content:  
AAASSSSSSYYYYMMDDCCCPPPPPP&&340002142&&&  
总共40位/40digits in total

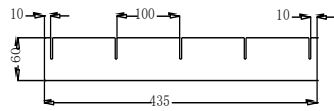
二维码解析如下/Code analysis:  
AAA:name code(名称代码, 3位, 由得力客户提供)  
SSSSSS:supplier code(供应商SAP代码, 6位, 由得力客户提供)  
YYYYMMDD:producing month(产品实际生产时间, 8位)  
CCC:Line code, 3 digits(生产线代码, 3位, 如L01)  
PPPPPP:product listing number(产品序列号, 000001-999999)  
340002142:material code(得力SAP物料编码; 9位; 固定不变)  
S:fixde value(固定值, 不变)

未做认证 铭牌仅供参考

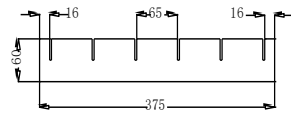
Remark:

- 1.Above label is laser engraved.
- 2.The height dimension of double insulation mark can NOT less than 5mm.

## 11. Package Drawing/包装示意图



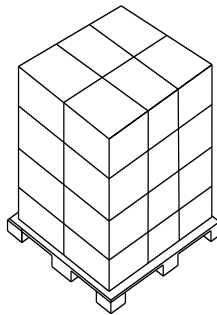
five partitioning card 435\*60



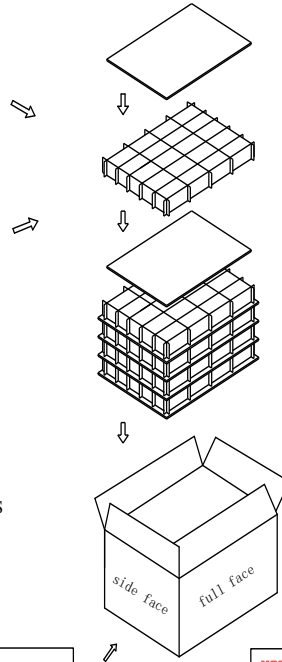
six partitioning card 375\*60

### Packing Instruction:

- 1、the product put in the PE bag ,  
then the packing product put in the  
partitioning card groove , 20PCS/floor,  
5 floors in all , 100PCS/box  
such as : 20pcs/floor\*5floor=100PCS/box
- 2、the usage of the packing materials:
  - 1) the usage of the partitioning card 435\*375\*60: 5PCS
  - 2) the usage of the PE bag 150\*120: 100PCS
  - 3) the usage of the flat 435\*375:6PCS
  - 4) carton box 450\*390\*335: 1PCS
- 3、Pallet stacke instruction:
  - 1) Pallet size is:L1200\*W950\*H135mm
  - 2) per floor set 6pcs
  - 3) stacke per 4floor\*6pcs carton  
total 24 pcs carton

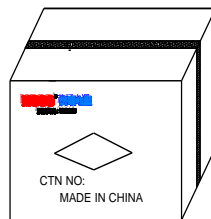
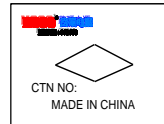


The pallet stack drawing



P/O NO.  
ITEM NO.  
QTY  
G.W.: N.W.:  
CTN SIZE:

SIZE: 450L\*390W\*335H

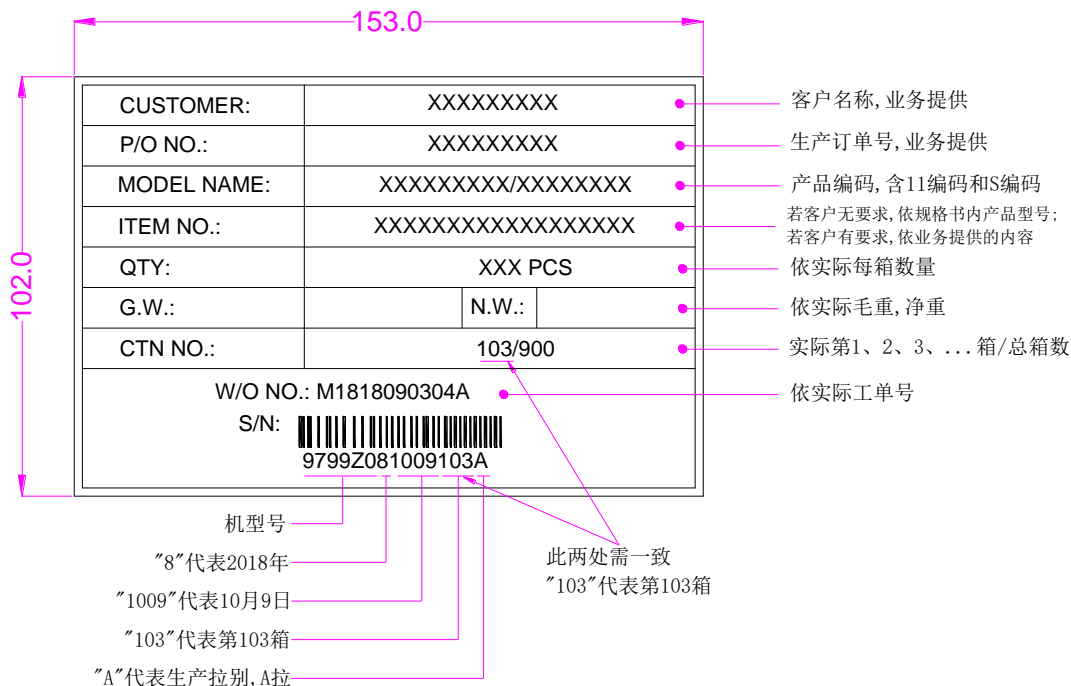


The product will be packed in the carton box and  
the box will be sealed by the sticker

- PE 袋包装要求:  PE 袋不用胶带封口;  
 PE 袋用胶带封口;  
 其它要求;

备注:若客户未进行选择 PE 袋包装要求或备注时,  
我司默认采用 PE 袋不用胶带封口包装方式.

Carton label



备注:

1. 材质: 80P铜版纸(来料为空白标签)
2. 颜色: 白底黑字, 公司内部打印
3. 背附胶, 粘贴在纸箱上后, 无翘边等不良;
4. 符合ROHS标准及茂硕环保要求
5. 使用空白料号3230200011